

寄養服務 (日間照顧)

服務性質

在日間為有需要家庭在其所住地區的寄養家庭提供家庭照顧服務，使幼兒能於日間接受照顧並於晚上回家由父母照顧，以減低對其日常生活的影響

服務對象

六歲以下的幼兒
(如有真正需要，可服務六至十歲以下的兒童)

服務時間

每天最多 12 小時，服務至晚上十時

費用

非收費

申請手續

• 可透過社工、學校輔導老師、輔導員及臨床心理學家安排轉介
• 轉介者可向社會福利署中央寄養服務課申請服務

查詢

社會福利署中央寄養服務課
香港灣仔軒尼詩道 130 號
修頓中心 22 樓 2202 室
電話：2573 2282 傳真：2573 2120

Foster Care (Day) (FC(D))

Service Nature

Provide family care during day time in foster homes for needy families in their vicinity so that children can receive care during the day and return home under their parents' care at night with the least disruption to their daily routines

Service Target

Children aged under 6
(can be extended to children aged 6 to under 10 where there are proven needs)

Service Hours

A maximum of 12 hours per day, and service being available till 10 p.m.

Fee Charging

Non-fee charging

Application Procedure

• Application through referrers, such as social workers, student guidance teachers, counsellors and clinical psychologists
• Referrers to apply to Central Foster Care Unit, Social Welfare Department

Enquiry

Central Foster Care Unit
Social Welfare Department
Room 2202, 22/F, Southorn Centre
130 Hennessy Road
Wan Chai, Hong Kong
Tel : 2573 2282 Fax : 2573 2120

互助幼兒中心

服務性質

• 提供較具彈性和方便的幼兒照顧服務
• 活動主要由義工、鄰里或互助幼兒小組的家長以互助和義務形式運作

服務對象

三歲以下的幼兒
(營辦機構可酌情考慮服務三至六歲以下的幼兒)

服務時間

彈性安排，包括於平日黃昏或部份週末和部份公眾假期提供服務
@ 部份中心於晚上、週末和公眾假期透過預約提供服務

費用

• 由營辦機構決定
• 個別中心為具服務需要的低收入家庭提供半費或全費減免

申請手續

可直接聯絡屬意的互助幼兒中心申請服務

查詢

社會福利署幼兒中心督導組
香港灣仔軒尼詩道 130 號
修頓中心 23 樓 2312 室
電話：2835 2016 傳真：2591 9113

Mutual Help Child Care Centre (MHCCC)

Service Nature

• Provide a flexible, convenient and easily available form of child care service
• Activities being carried out mainly by volunteers, neighbours and / or parents of the mutual help child care group on a mutual help and voluntary basis

Service Target

Children aged under 3
(children aged 3 to under 6 can also be considered subject to operators' discretion)

Service Hours

Flexible and covering the evenings, some weekends and some public holidays
@ Some centres offer service by appointment in late evenings, on the weekends and during public holidays.

Fee Charging

• As determined by service operators
• Full or half fee waiving for low income families with social needs in some MHCCCs

Application Procedure

Direct application to MHCCCs

Enquiry

Child Care Centres Advisory Inspectorate
Social Welfare Department
Room 2312, 23/F, Southorn Centre
130 Hennessy Road, Wan Chai, Hong Kong
Tel : 2835 2016 Fax : 2591 9113

鄰里支援幼兒照顧計劃

服務性質

• 提供更具彈性的鄰里層面日間幼兒照顧服務
• 提昇在社區內鄰里間的互助精神
• 包括兩種服務模式：社區保姆服務和中心託管小組

服務對象

社區保姆服務：六歲以下的幼兒
中心託管小組：三歲至六歲以下的幼兒

服務時間

1. 社區保姆服務：上午七時至下午十一時
2. 中心託管小組：於晚上、部份週末及部份公眾假期提供服務

費用

• 由營辦機構決定，並由社會福利署核准
• 有社會需要的低收入家庭可獲半費或全費減免

申請手續

可直接向營辦機構申請服務

查詢

社會福利署熱線：2343 2255
網址：http://www.swd.gov.hk

Neighbourhood Support Child Care Project (NSCCP)

Service Nature

• Promote more flexible forms of day care service at neighbourhood level
• Promote the spirit of mutual help at the neighbourhood level in the community
• Consist of two service components: home-based child care service and centre-based care group

Service Target

Home-based child care service : children aged under 6
Centre-based care group : children aged 3 to under 6

Service Hours

1. Home-based child care service : 7:00 a.m. to 11:00 p.m.
2. Centre-based Care Group : covering late evenings, some weekends and some public holidays

Fee Charging

• As determined by service operators and approved by the Social Welfare Department
• Full or half fee waiving for low income families with social needs

Application Procedure

Direct application to operating organisations

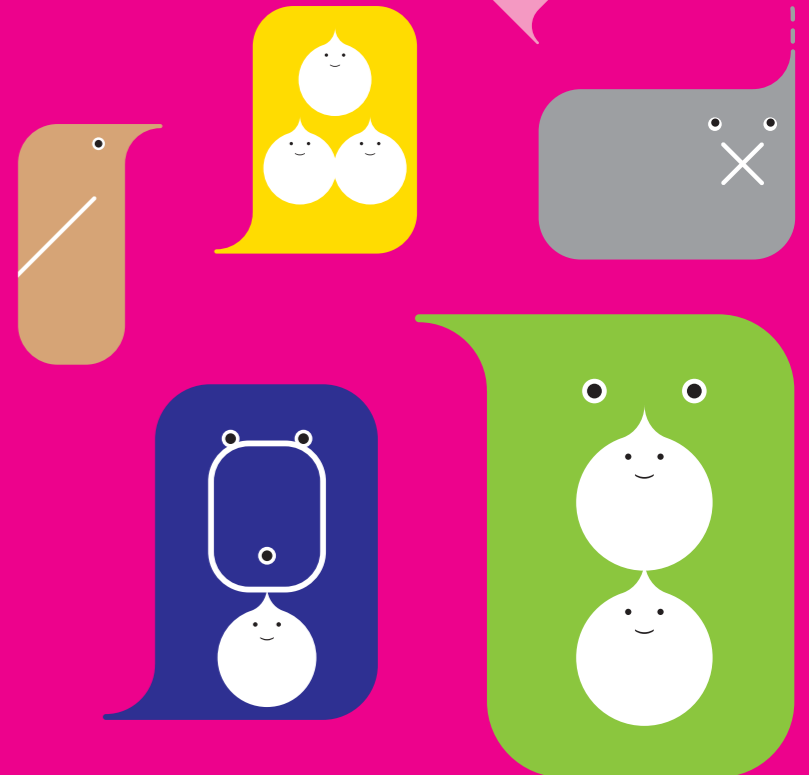
Enquiry

Social Welfare Department Hotline : 2343 2255
Website : http://www.swd.gov.hk



日間幼兒服務

Day Child Care Services



簡介

Introduction

有見於家長因工作或其他社會因素，例如長期患病或需要在家照顧長者，而未能為年幼子女提供適切的照顧，政府透過非政府機構提供各類具彈性的幼兒服務，以配合家長不同的工作時間及需要。

To assist parents who cannot provide adequate care for their young children due to employment or other social reasons such as chronic illness, caring of elderly at home, etc., the Government has provided different flexible forms of child care services through the Non-Governmental Organisations to meet the different working hours and needs of parents.

幼兒中心

服務性質

- 為三歲以下的幼兒提供全日照顧
- 提供活動以提升幼兒在智力、體能、情感和社交的發展

服務對象

三歲以下的幼兒

服務時間

星期一至五：上午八時至下午六時
星期六：上午八時至下午一時

費用

- 由社會福利署核准
- 低收入及有社會需要的家庭如有全日日託需要，可透過「幼稚園及幼兒中心學費減免計劃」而獲得部份或全數的學費減免
(請聯絡學生資助辦事處提出申請或瀏覽網址：<http://www.sfaa.gov.hk>)

申請手續

可直接聯絡屬意的幼兒中心申請服務

查詢

社會福利署幼兒中心督導組
香港灣仔軒尼詩道 130 號
修頓中心 23 樓 2312 室
電話：2835 2016 傳真：2591 9113

Child Care Centre (CCC)

Service Nature

- Provide full day care for children aged under 3
- Provide activities that enhance the intellectual, physical, emotional and social development of children

Service Target

Children aged under 3

Service Hours

Monday to Friday : 8 a.m. to 6 p.m.
Saturday : 8 a.m. to 1 p.m.

Fee Charging

- As approved by the Social Welfare Department
- Full or partial fee waiving under the Kindergarten and Child Care Centre Fee Remission Scheme for low income families with social needs and requiring full day child care service
(For application, please contact the Student Financial Assistance Agency or visit its website : <http://www.sfaa.gov.hk>)

Application Procedure

Direct application to CCCs

Enquiry

Child Care Centres Advisory Inspectorate
Social Welfare Department
Room 2312, 23/F, Southorn Centre
130 Hennessy Road
Wan Chai, Hong Kong
Tel : 2835 2016 Fax : 2591 9113

幼稚園暨幼兒中心 (備註)

服務性質

為六歲以下的幼兒提供全日照顧及教育服務

服務對象

六歲以下的幼兒

服務時間

星期一至五：上午八時至下午六時
星期六：上午八時至下午一時

費用

- 由教育局核准
- 低收入及有社會需要的家庭如有全日日託 / 教育需要，可透過「幼稚園及幼兒中心學費減免計劃」而獲得部份或全數的學費減免
(請聯絡學生資助辦事處提出申請或瀏覽網址：<http://www.sfaa.gov.hk>)

申請手續

可直接聯絡屬意的幼稚園暨幼兒中心申請服務

查詢

教育局學前服務聯合辦事處
香港灣仔皇后大道東 183 號
合和中心 25 樓 2507-09 室
電話：3107 2197 傳真：3107 2180

備註：單張上的幼稚園暨幼兒中心僅指以往受社會福利署資助的中心。

Kindergarten-cum-Child Care Centre (KG-cum-CCC) (Note)

Service Nature

Provide full day care and education services for children aged under 6

Service Target

Children aged under 6

Service Hours

Monday to Friday : 8 a.m. to 6 p.m.
Saturday : 8 a.m. to 1 p.m.

Fee Charging

- As approved by the Education Bureau
- Full or partial fee waiving under the Kindergarten and Child Care Centre Fee Remission Scheme for low income families with social needs and requiring full day child care / education service
(For application, please contact the Student Financial Assistance Agency or visit its website : <http://www.sfaa.gov.hk>)

Application Procedure

Direct application to KG-cum-CCCs

Enquiry

Joint Office for Pre-primary Services
Education Bureau
Room 2507-09, 25/F, Hopewell Centre
183 Queen's Road East
Wan Chai, Hong Kong
Tel : 3107 2197 Fax : 3107 2180

Note : KG-cum-CCCs in this leaflet refer only to previously aided centres of the Social Welfare Department.

暫託幼兒服務

服務性質

由幼兒中心和幼稚園暨幼兒中心提供全日、半日或每節兩小時的暫託幼兒照顧服務，以協助需要處理突發事情或其他事宜的家長

服務對象

幼兒中心：三歲以下的幼兒
幼稚園暨幼兒中心：六歲以下的幼兒

服務時間

星期一至五：上午八時至下午六時
星期六：上午八時至下午一時

費用

- 全日：\$64
- 半日：\$32
- 每兩小時：\$16
- 膳食費用：\$6.4

申請手續

可直接聯絡屬意的幼兒中心或幼稚園暨幼兒中心申請服務

查詢

- 幼兒中心的暫託服務：
社會福利署幼兒中心督導組
香港灣仔軒尼詩道 130 號
修頓中心 23 樓 2312 室
電話：2835 2016 傳真：2591 9113
- 幼稚園暨幼兒中心的暫託服務：
教育局學前服務聯合辦事處
香港灣仔皇后大道東 183 號
合和中心 25 樓 2507-09 室
電話：3107 2197 傳真：3107 2180

Occasional Child Care Service (OCCS)

Service Nature

Provide occasional child care assistance on full-day, half-day or two-hour sessional basis at CCCs and KG-cum-CCCs for parents or carers with sudden engagements or various commitments

Service Target

CCCs : Children aged under 3
KG-cum-CCCs : Children aged under 6

Service Hours

Monday to Friday : 8 a.m. to 6 p.m.
Saturday : 8 a.m. to 1 p.m.

Fee Charging

- Full Day Session : \$64
- Half Day Session : \$32
- Two-hour Session : \$16
- Meal Charge : \$6.4

Application Procedure

Direct application to CCCs or KG-cum-CCCs

Enquiry

- OCCS in CCCs :
Child Care Centres Advisory Inspectorate
Social Welfare Department
Room 2312, 23/F, Southorn Centre
130 Hennessy Road, Wan Chai, Hong Kong
Tel : 2835 2016 Fax : 2591 9113
- OCCS in KG-cum-CCCs :
Joint Office for Pre-primary Services
Education Bureau
Room 2507-09, 25/F, Hopewell Centre
183 Queen's Road East
Wan Chai, Hong Kong
Tel : 3107 2197 Fax : 3107 2180

延長時間服務

服務性質

由幼兒中心及幼稚園暨幼兒中心提供較長時間幼兒照顧服務，以滿足在職父母和有社會需要的家庭

服務對象

幼兒中心：三歲以下的幼兒
幼稚園暨幼兒中心：六歲以下的幼兒

服務時間

星期一至五：下午六時至八時
星期六：下午一時至三時
* 個別中心的服務時間會因應服務需要而有所調整

費用

每小時 \$13
(大部份幼兒中心及幼稚園暨幼兒中心會為具服務需要的低收入家庭提供費用資助。)

申請手續

可直接聯絡屬意的幼兒中心或幼稚園暨幼兒中心申請服務

查詢

- 幼兒中心的延長時間服務：
社會福利署幼兒中心督導組
香港灣仔軒尼詩道 130 號
修頓中心 23 樓 2312 室
電話：2835 2016 傳真：2591 9113
- 幼稚園暨幼兒中心的延長時間服務：
教育局學前服務聯合辦事處
香港灣仔皇后大道東 183 號
合和中心 25 樓 2507-09 室
電話：3107 2197 傳真：3107 2180

Extended Hours Service (EHS)

Service Nature

Provide longer hours of child care assistance at CCCs and KG-cum-CCCs to meet the social needs of families and working parents

Service Target

CCCs : Children aged under 3
KG-cum-CCCs : Children aged under 6

Service Hours

Monday to Friday : 6 p.m. to 8 p.m.
Saturday : 1 p.m. to 3 p.m.
* Individual centres may vary their service hours depending on service demand.

Fee Charging

\$13 per hour
(Fee subsidy for low income families with social needs in most CCCs and KG-cum-CCCs.)

Application Procedure

Direct application to CCCs or KG-cum-CCCs

Enquiry

- EHS in CCCs :
Child Care Centres Advisory Inspectorate
Social Welfare Department
Room 2312, 23/F, Southorn Centre
130 Hennessy Road, Wanchai, Hong Kong
Tel : 2835 2016 Fax : 2591 9113
- EHS in KG-cum-CCCs :
Joint Office for Pre-primary Services
Education Bureau
Room 2507-09, 25/F, Hopewell Centre
183 Queen's Road East
Wan Chai, Hong Kong
Tel : 3107 2197 Fax : 3107 2180