



社會福利署

Social Welfare Department

精神健康綜合社區中心

Integrated Community Centre
for Mental Wellness (ICCMW)

社會福利署熱線

Social Welfare Department Hotline : 2343 2255

網址 Website : <http://www.swd.gov.hk>

Integrated Community Centre for Mental Wellness (ICCMW) (Service Brief)




Service Description

The Integrated Community Centre for Mental Wellness (ICCMW) is an integrated centre providing one-stop, district-based and accessible community support and social rehabilitation services ranging from early prevention to risk management for discharged mental patients, persons with suspected mental health problems, their families / carers and residents living in the serving district.



Target Group

The target groups of ICCMW are those living in the district, including -

- ◆ Discharged mental patients aged 15 and above
 - ◆ Persons with suspected mental health problems aged 15 and above
 - ◆ Family members / carers of the above persons
 - ◆ Residents with interest in understanding and improving their mental health
- 



Scope of Services

The ICCMW provides the following services -

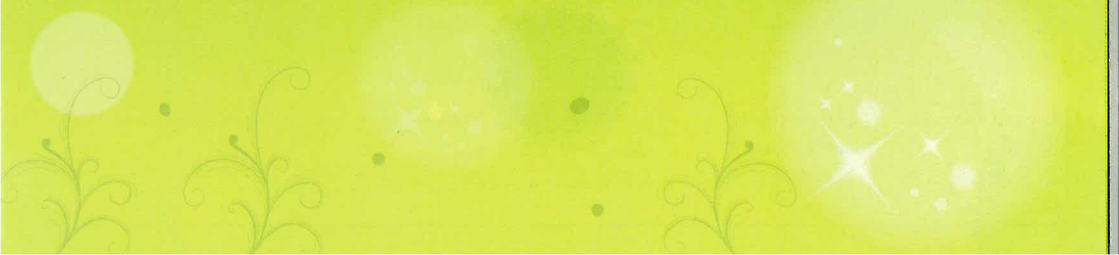
- ◆ Drop-in services
- ◆ Outreaching services
- ◆ Casework counseling
- ◆ Therapeutic and supportive group work services
- ◆ Networking services, including social and recreational activities
- ◆ Day training
- ◆ Outreaching occupational therapy training services
- ◆ Public education programs on mental health
- ◆ Referral to the Community Psychiatric Service of the Hospital Authority for clinical assessment or psychiatric treatment



Referring Procedures

Referrals can be made to ICCMW through -

- ◆ self-application; or
- ◆ doctors, social workers, allied health workers or government departments.



Integrated Community Centre for Mental Wellness

精神健康綜合社區中心

ICCMW Service District 服務區域	Agency Name 機構名稱	Address of Service Point 服務點地址	Tel. No. 電話號碼	Fax No. 傳真號碼
Central Western & Southern Districts 中西南區	Fu Hong Society 扶康會	5/F, FHS Rehabilitation Centre, 85 Yue Kwong Road, Aberdeen, Hong Kong. 香港仔漁光道85號扶康會康復 中心五樓	2214 2509	2553 8796
	Tung Wah Group of Hospitals 東華三院	G/F, 2 Wong Chuk Hang Path, TWGHs Wong Chuk Hang Complex, Hong Kong. 香港黃竹坑徑2號東華三院黃 竹坑綜合大樓地下	2814 2837	2518 3801
Islands District 離島區	New Life Psychiatric Rehabilitation Association 新生精神康復會	Mobile Service Team 2/F., New Life Building, 332 Nam Cheong St., Kowloon. 九龍南昌街332號新生會大樓二樓 流動服務隊	3552 5480	3552 5355
Eastern District 東區	Baptist Oi Kwan Social Service 浸信會愛羣社會服 務處	8/F, 36 Oi Kwan Road, Wanchai, Hong Kong. 香港灣仔愛群道36號八樓	3413 1641	3413 1656
	Richmond Fellowship of Hong Kong 利民會	G/F, Fu Tsui House, Wan Tsui Estate, Chai Wan, Hong Kong. 香港柴灣環翠邨富翠樓地下	2505 4287	2558 3914 / 2976 5330
Wanchai 灣仔	Baptist Oi Kwan Social Service 浸信會愛羣社會服 務處	4/F, 36 Oi Kwan Road, Wanchai, Hong Kong. 香港灣仔愛群道36號四樓	3413 1641	3413 1590
Kwun Tong 觀塘	The Mental Health Association of Hong Kong 香港心理衛生會	4/F, Sai Tso Wan Neighbourhood Community Centre, 81, Cha Kwo Ling Road, Kwun Tong, Kowloon. 九龍觀塘茶果嶺道81號茜草灣鄰 里社區中心四樓	2346 3798	2348 2428
Wong Tai Sin 黃大仙	Richmond Fellowship of Hong Kong 利民會	Podium, Lung Cheung Plaza, Upper Wong Tai Sin Estate, Wong Tai Sin, Kowloon. 九龍黃大仙上邨龍翔廣場平台	2322 3794	2320 1178
Tseung Kwan O (South) 將軍澳(南)	Christian Family Service Centre 基督教家庭服務中 心	Room 704, 7/F., 3 Tsui Ping Road, Kwun Tong, Kowloon. 九龍觀塘翠屏道3號七樓704室	3521 1611	2706 1223

ICCMW Service District 服務區域	Agency Name 機構名稱	Address of Service Point 服務點地址	Tel. No. 電話號碼	Fax No. 傳真號碼
Sai Kung & Tseung Kwan O (North) 西貢及將軍澳(北)	Stewards Ltd. 香港神託會	1/F., 145 Hong Ning Road, Kwun Tong, Kowloon. 九龍觀塘康寧道145號一樓	2633 3117	2631 0779
Kowloon City 九龍城	The Society of Rehabilitation and Crime Prevention, Hong Kong 香港善導會	2/F, 402-404, Shanghai Street, Kowloon. 九龍上海街402-404號三樓	2332 5332	2323 3934
Yau Tsim Mong 油尖旺	New Life Psychiatric Rehabilitation Association 新生精神康復會	2/F, New Life Building, 332 Nam Cheong Street, Kowloon. 九龍南昌街332號新生會大樓二樓	3552 5440	3552 5353
Shamshuipo 深水埗	New Life Psychiatric Rehabilitation Association 新生精神康復會	2/F, New Life Building, 332 Nam Cheong Street, Kowloon. 九龍南昌街332號新生會大樓二樓	2319 2103	2784 5367
Tsuen Wan 荃灣	Caritas Hong Kong 香港明愛	Caritas Jockey Club Lai King Rehabilitation Centre, 31 Lai Chi Ling Road, Kwai Chung, N.T. 新界葵涌荔枝嶺路三十一號 明愛賽馬會荔景社會服務中心	3105 5337	3105 0167
Kwai Tsing 葵青	Baptist Oi Kwan Social Service 浸信會愛羣社會服 務處	G/F., Wing A, Yee Wai House, Tsing Yi Estate, Tsing Yi, N.T. 新界青衣青衣邨宜偉樓A翼地下	2434 4569	2433 6242
Kwai Chung 葵涌	New Life Psychiatric Rehabilitation Association 新生精神康復會	Units 101-104, 106, G/F., Block 9, Kwai Shing West Estate, Kwai Chung, N.T. 新界葵涌葵盛西邨第九座地下 101-104, 106室	3552 5420	3552 5352
Shatin 沙田	Stewards Ltd. 香港神託會	Units 3-18, G/F., Bean Goose House, Sha Kok Estate, Sha Tin, N.T. 新界沙田沙角邨美雁樓地下3-18 號	2645 1263	2632 5056
	New Life Psychiatric Rehabilitation Association 新生精神康復會	G/F., Sun Chun House, Sun Chui Estate, Sha Tin, N.T. 新界沙田新翠邨新俊樓地下	3552 5460	3552 5354

ICCMW Service District 服務區域	Agency Name 機構名稱	Address of Service Point 服務點地址	Tel. No. 電話號碼	Fax No. 傳真號碼
Tai Po 大埔	The Mental Health Association of Hong Kong 香港心理衛生會	G/F., Wing B, Kwong Chi House, Kwong Fuk Estate, Tai Po, N.T. 新界大埔廣福邨廣智樓B翼地下	2651 8132	2638 5130
North District 北區	Caritas Hong Kong 香港明愛	G/F., Wing B, Yung Wa House, Yung Shing Court, Fanling, N.T. 新界粉嶺雍盛苑雍華閣B翼地下	2278 1016	2278 1061
Yuen Long 元朗	The Society of Rehabilitation and Crime Prevention, Hong Kong 香港善導會	Flat 1003, 10/F, Kwong Wah Plaza, 11 Tai Tong Road, Yuen Long, N.T. 新界元朗大棠路11號光華廣場十樓1003室	3163 2873	3907 0180
	New Life Psychiatric Rehabilitation Association 新生精神康復會	The Wellness Centre Units 503-504, 5/F, Ancillary Facilities Block, Tin Chak Estate, Tin Shui Wai, N.T. 新界天水圍天澤邨服務設施大樓五樓503-504室安泰軒	2451 4369	2486 3007
Tuen Mun 屯門	New Life Psychiatric Rehabilitation Association 新生精神康復會	G/F, On Ting Yau Oi Community Centre, On Ting Estate, Tuen Mun, N.T. 新界屯門安定友愛社區中心地下	2450 2172	2441 5625
	Hong Kong Sheng Kung Hui Welfare Council 香港聖公會福利協會	Hong Kong Sheng Kung Hui Welfare Council The Providence Garden for Rehab 82 Tsun Wen Road, Tuen Mun, N.T. 新界屯門震寰路82號 香港聖公會福利協會康恩園	2465 3210	3511 0950

社會福利署
康復及醫務社會服務科
二零一零年十月

Rehabilitation and Medical Social Services Branch
Social Welfare Department
October 2010