

Ways to access clinical psychological service

Our clinical psychological service is free of charge; but a referral from a social worker is needed. For those who are already receiving services from other SWD units (such as Integrated Family Service Centres, Probation and Community Service Orders Offices, Family and Child Protective Services Units.), please contact the responsible social worker for enquiry.

Members of the public may also contact the Integrated Family Service Centre in their residential district. Upon a social worker's assessment, referrals can be made to the Clinical Psychology Unit of the district if needed.

(SWD hotline: 2343 2255)

Confidentiality → We are bound by the Data Protection Principles set out in the Hong Kong Personal Data (Privacy) Ordinance ("the PDPO") (Cap. 486).

List of Clinical Psychology Units by district

Clinical Psychology Unit 1 Room 502, 5/F., Nan Fung Commercial Centre, 19 Lam Lok Street, Kowloon Bay, Kowloon
☎ (Telephone: 2707 7668)

Clinical Psychology Unit 2 4/F, Tai Po Complex, 8 Heung Sze Wui Street, Tai Po Market, New Territories
☎ (Telephone: 3183 9402)

Clinical Psychology Unit 3 Room 501, 5/F, 14 Taikoo Wan Road, Taikoo Shing, Hong Kong
☎ (Telephone: 2967 4110)

Clinical Psychology Unit 4 10/F, Tsuen Wan Multi-storey Carpark Building, 174-208 Castle Peak Road, Tsuen Wan, New Territories
☎ (Telephone: 2940 7021)

Clinical Psychology Unit 5 Wings B & C, G/F, Shui Yip House, Tin Shui (2) Estate, Tin Shui Wai, New Territories
☎ (Telephone: 3568 7914)

Clinical Psychology Unit 6 Room 108, 1/F, Mong Kok Government Offices, 30 Luen Wan Street, Mong Kok, Kowloon
☎ (Telephone: 2399 2399)



SWD's website
<http://www.swd.gov.hk>

 社會福利署
Social Welfare Department

Clinical Psychological Services



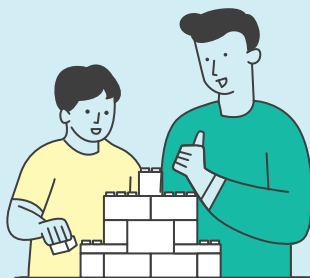
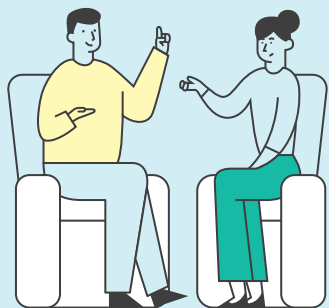
 社會福利署
Social Welfare Department

Service objectives and target groups

In life, it is inevitable that we encounter challenges and setbacks, such as work stress, interpersonal conflicts, parenting problems, losing a loved one and other unexpected accidents. These may make us feel depressed, anxious, sad or helpless; affecting our ability to cope. The Clinical Psychological Service Branch (CPSB) of the Social Welfare Department (SWD) provides psychological assessment and treatment to those in need, helping those in distress overcome their difficulties. CPSB also provides public education and professional training to enhance people's understanding and awareness on mental health.



Service scope



Casework service

We provide psychological assessment (including intellectual assessment, court assessment and/or assessment of psychological functioning) and treatment related to social development, personality, emotion, behaviour and relationship to children and adults.

Rehabilitation service

The Central Psychological Support Service provides consultation services to rehabilitation service units; supporting families of pre-school children and adults with developmental disorders.

Crisis intervention and early identification for critical incidents survivors

When a crisis occur in the community, or when Hong Kong people are involved in a critical incident overseas, we provide early psychological intervention to those in need.

Public education on mental health

Clinical psychologists provide information on mental health through various media channels, such as online educational video clips, public talks, books and leaflets, radio and TV programmes, newspaper and media interviews.

Professional training

We provide training on mental health and on psychological interventions to other professionals. We also provide supervision to postgraduate students studying clinical psychology in the University of Hong Kong and the Chinese University of Hong Kong.