



学前儿童课余托管服务 After School Care Programme for Pre-primary Children [ASCP(PC)]

服务性质

- 为未能在课余时间获其家长或照顾者適切照顾的学前儿童，提供照顾服务
- 以小组/个人形式提供有趣味及富创意的发展性和社交活动予服务使用者

服务对象

3至6岁以下儿童；或
正就读幼稚园/幼稚园暨幼儿中心幼儿班 (K1)、低班 (K2) 或高班 (K3) 的儿童

服务时间

逢星期一至星期五 (公众假期除外) 开放，于上午、下午及黄昏3个时段提供服务

个别中心会因应地区需要，有额外的开放时间 (例如在星期六、日或公众假期)

费用

- 服务收费由社会福利署核准
- 有社会需要及经济困难的服务使用者，可向营办机构申请费用减免

申请

可直接向营办机构申请服务

Service Nature

- Provide child care services for pre-primary children whose parents or carers are unable to provide proper care to them before / after school hours
- Group / individual activities will be provided to service users to participate in interesting, creative, developmental and social activities

Service Target

Children aged 3 to under 6; or
Children attending nursery (K1), lower (K2) or upper (K3) classes in kindergartens / kindergarten-cum-child care centres

Service Hours

Opening three sessions a day (i.e. the morning session, afternoon session, and evening session) from Monday to Friday (except public holidays)

Some Centres may provide extra opening sessions (for example, during Saturdays, Sundays or Public Holidays) to meet the service demand of their respective districts

Fees

- The fee charging level is determined by Social Welfare Department
- Needy families with financial hardship may approach service operators direct for fee reduction / waiving

Application

Direct application to service operators



邻里支援幼儿照顾计划 Neighbourhood Support Child Care Project (NSCCP)

服务性质

- 提供具弹性的幼儿照顾服务
- 推动社区参与和邻里互助
- 服务内容包括：家居照顾服务和中心托管小组

服务对象

家居照顾服务：9岁以下儿童
中心托管小组：3岁至9岁以下儿童

服务时间

家居照顾服务：上午7时至晚上11时
中心托管小组：平日(星期一至星期五)直至晚上9时和部分周末

费用

- 由营办机构决定，并由社会福利署批核
- 有社会需要的低收入家庭可向营办机构申请费用减免

申请

可直接向营办机构申请服务

Service Nature

- Provide flexible child care services
- Promote community participation and mutual help in the neighbourhood
- Service components: home-based child care service and centre-based care group

Service Target

Home-based child care service:
Children aged under 9
Centre-based care group:
Children aged 3 to under 9

Service Hours

Home-based child care service:
7 a.m. to 11 p.m.
Centre-based care group:
Till 9 p.m. on weekdays and some weekends

Fees

- As determined by service operators and approved by the Social Welfare Department
- Low income families with social needs may approach service operators for fee reduction / waiving application

Application

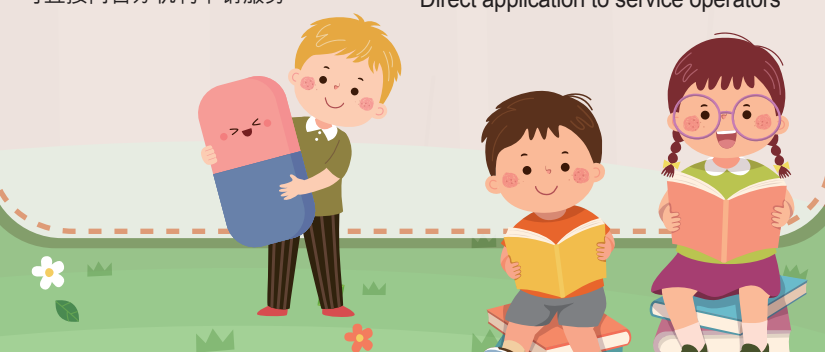
Direct application to service operators

查询 Enquiry

社会福利署热线
SWD Hotline : 2343 2255

网址
Website : <https://www.swd.gov.hk>

日间幼儿照顾服务 Day Child Care Services



切勿独留儿童不顾

简介

为支援因工作或其他原因而暂时未能照顾子女的家长，社会福利署资助非政府机构提供不同类别的幼儿照顾服务，以配合家长及幼儿的需要。

Don't Leave Children Unattended

Introduction

To assist parents who cannot take care of their young children because of work or other reasons, the Social Welfare Department subsidises non-governmental organisations to provide different types of child care services to meet the needs of the parents and their young children.



幼儿中心服务

[包括独立幼儿中心及附设于幼稚园的幼儿中心]

CCC

Child Care Centre (CCC) Service

including standalone CCCs and CCCs attached to Kindergartens (KGs)

服务性质

为0至3岁以下的幼儿提供日间照顾服务

服务对象

0至3岁以下的幼儿

服务时间

星期一至五：上午8时至下午6时

星期六：上午8时至下午1时

费用

- 独立幼儿中心的服务费用由社会福利署批核，附设于幼稚园的幼儿中心的服务费用则由教育局幼稚园及幼儿中心联合办事处批核
- 正接受全日制资助幼儿中心服务的幼儿的家长，可经所属全日制资助幼儿中心提交「幼儿中心家长津贴」申请，无需入息审查
- 来自低收入家庭的幼儿如接受全日制托管服务，可向在职家庭及学生资助事务处学生资助处申请「幼稚园及幼儿中心学费减免计划」以获得部分或全数的服务费用减免

申请人可向其子女受托的幼儿中心索取申请表、指引及有关申请文件，并交回在职家庭及学生资助事务处学生资助处处理。有关申请的详情，请浏览学生资助处网页：

<https://www.wfsfaa.gov.hk/sfo/sc/preprimary/kcfr/overview.htm>

申请

可直接向各中心申请服务



Service Nature

To provide day care service to the children aged from birth to under 3

Service Target

Children aged from birth to under 3

Service Hours

Monday to Friday : 8 a.m. to 6 p.m.

Saturday : 8 a.m. to 1 p.m.

Fees

- Service fees charged by standalone CCCs and CCCs attached to KGs have to be approved by Social Welfare Department and Joint Office for Kindergartens and Child Care Centres of the Education Bureau respectively
- Parents with children receiving full-day aided CCC service can apply for Child Care Centre Parent Subsidy (CCCPS) through their aided CCCs. Financial assessment is not required
- Children from low income families receiving full-day child care service can apply for Kindergarten and Child Care Centre Fee Remission Scheme (KCFRS) to cover part or whole of service fee from the Student Finance Office of the Working Family and Student Financial Assistance Agency (WFSFAA)

The Applicants may obtain application forms, guidance notes and the related application documents from the CCCs in which their children are studying/receiving care services and submit to WFSFAA for processing. For detailed information of KCFRS, please visit WFSFAA website:

<https://www.wfsfaa.gov.hk/sfo/en/preprimary/kcfr/overview.htm>

Application

Direct applications at the preferred Centres

OCCS

暂托幼儿服务

Occasional Child Care Service (OCCS)

服务性质

部分独立幼儿中心和幼稚园暨幼儿中心为有需要的幼儿提供全日、半日或每节2小时的暂托幼儿照顾服务，以协助需要处理突发事情或其他事宜的家长或照顾者

服务对象

- 独立幼儿中心：
0至3岁以下的幼儿
- 幼稚园暨幼儿中心：
0或2至6岁以下的幼儿

服务时间

星期一至五：上午8时至下午6时

星期六：上午8时至下午1时

费用

- 全日\$64，半日\$32，每2小时一节为\$16；另加膳食费
- 有社会需要的低收入家庭可获费用减免

申请

可直接向各中心申请服务



Service Nature

To provide OCCS on full-day, half-day or two-hour sessional basis at some standalone CCCs and KG-cum-CCCs for parents or carers with sudden engagements or various commitments

Service Target

- Standalone CCCs:
Children aged from birth to under 3
- KG-cum-CCCs:
Children aged from birth / 2 to under 6

Service Hours

Monday to Friday : 8 a.m. to 6 p.m.

Saturday : 8 a.m. to 1 p.m.

Fees

- \$64 for a full-day session, \$32 for a half-day session, \$16 for a two-hour session, excluding meal charge
- Fee reduction / waiving for low income families with social needs

Application

Direct applications at the preferred Centres



EHS

延长服务

Extended Hours Service (EHS)

服务性质

部分独立幼儿中心及幼稚园暨幼儿中心为有需要的幼儿提供较长时间的幼儿照顾服务，以满足有需要的家庭和在职父母

服务对象

- 独立幼儿中心：
0至3岁以下的幼儿
- 幼稚园暨幼儿中心：
0或2至6岁以下的幼儿

服务时间

星期一至五：下午6时至7时或8时

星期六：下午1时至2时、3时或8时

- * 个别中心的服务时间会因应服务需要而有所调整

费用

- 每小时\$13
- 有社会需要的低收入家庭可获费用资助

申请

可直接向各中心申请服务



Service Nature

To provide longer hours of child care assistance at some standalone CCCs and KG-cum-CCCs to meet the social needs of families and working parents

Service Target

- Standalone CCCs:
Children aged from birth to under 3
- KG-cum-CCCs:
Children aged from birth / 2 to under 6

Service Hours

Monday to Friday:
6 p.m. to 7 p.m. / 8 p.m.

Saturday:
1 p.m. to 2 p.m. / 3 p.m. / 8 p.m.

- * Individual centres may vary their service hours depending on the service demand

Fees

- Hourly rate is charged at \$13
- Fee subsidy for low income families with social needs

Application

Direct applications at the preferred Centres

