

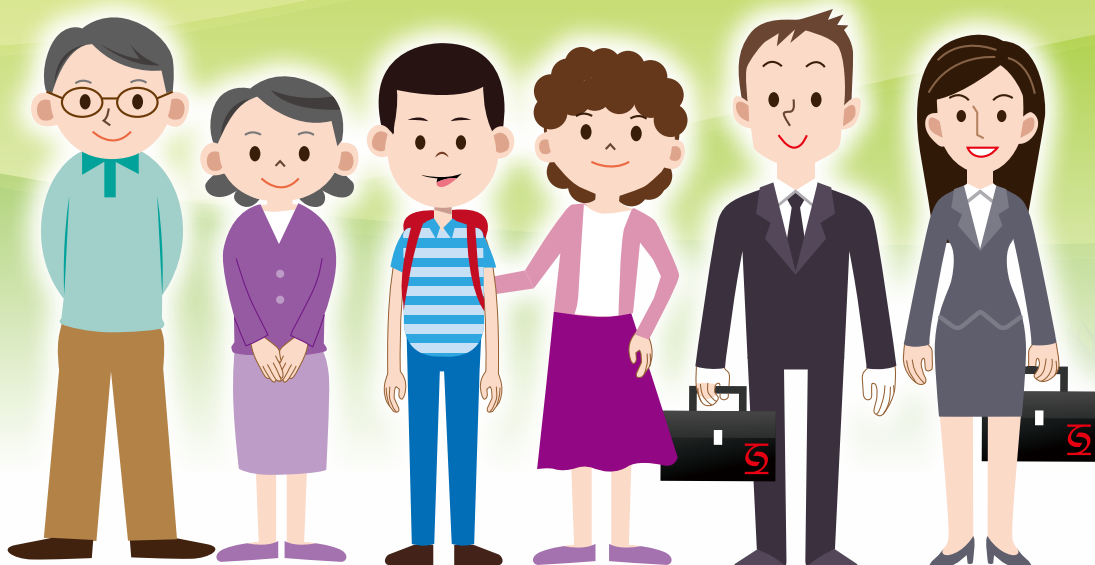


社會福利署

Social Welfare Department

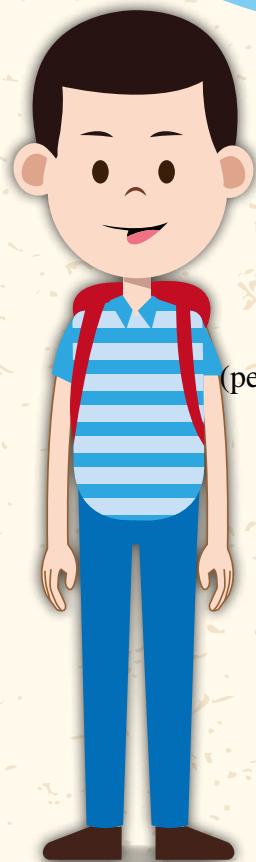
# Special Needs Trust

## Easy-to-read Booklet



1

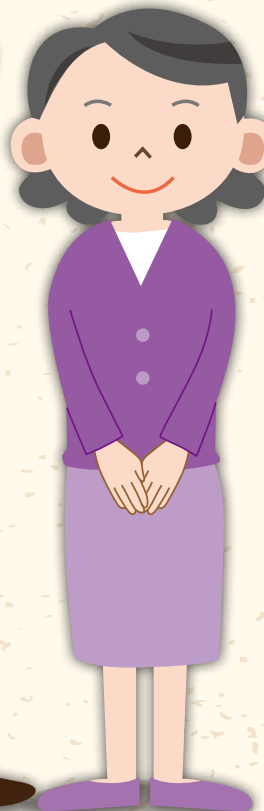
Why do I need  
the Special Needs Trust  
(SNT)?



Ming  
(person with special  
needs)



Ming's parents/  
relatives



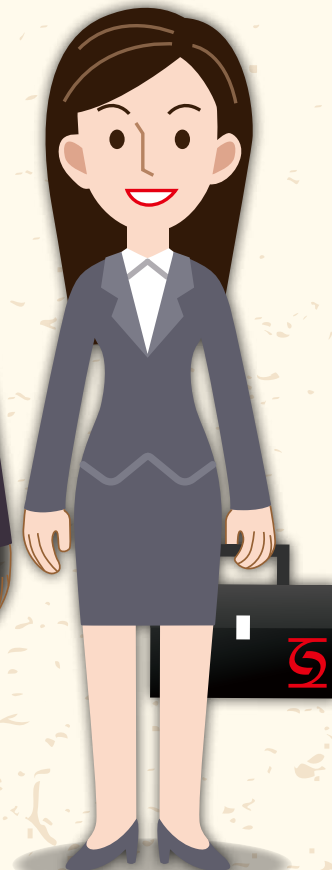
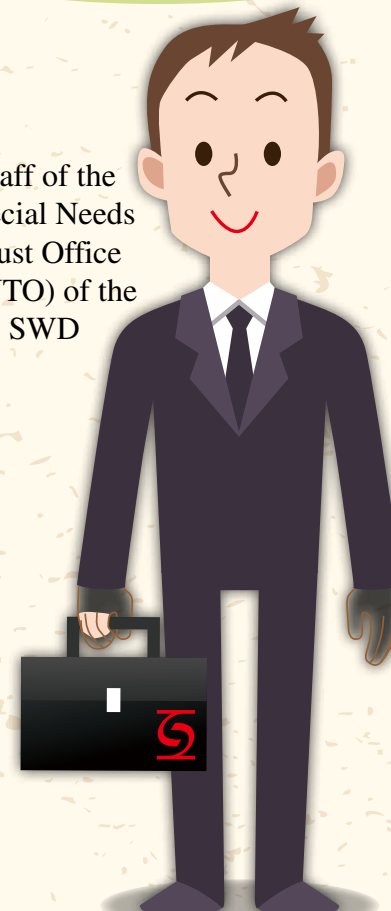
2

With the SNT of the Social  
Welfare Department (SWD), there will  
be someone to look after you when we  
are not here anymore (have  
passed away).



Your carer

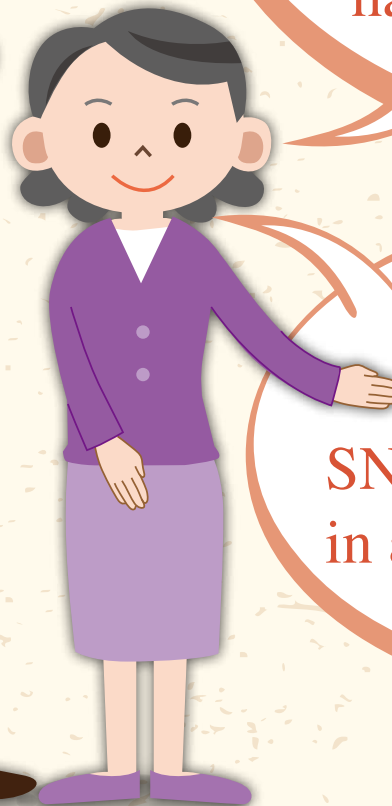
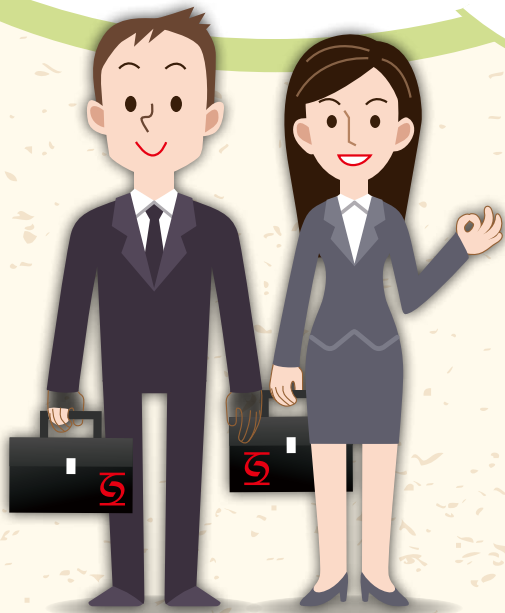
Staff of the  
Special Needs  
Trust Office  
(SNTO) of the  
SWD



3 We will entrust someone to look after you in the future,



4 and discuss with the staff of the SNTTO of the SWD on how your carer will look after you when we are not here anymore (have passed away).



5 For example, when you go to work or school, when you are having fun, shopping and dining...

6 We will send the money to the SNTTO of the SWD in advance.



7

One day, when we are not here anymore (have passed away),

8

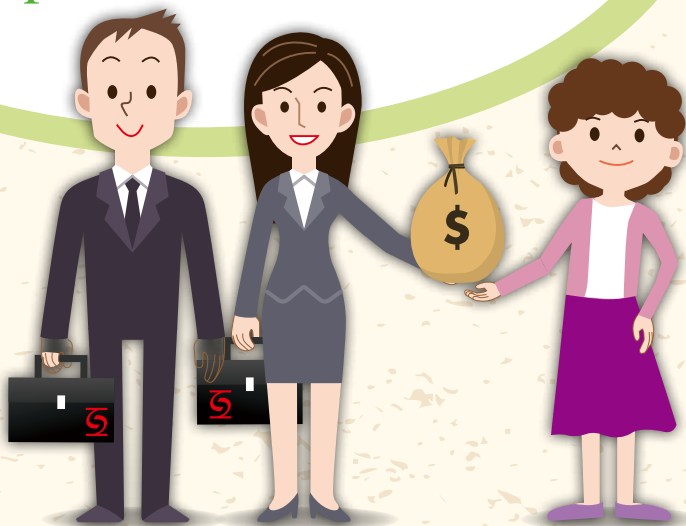
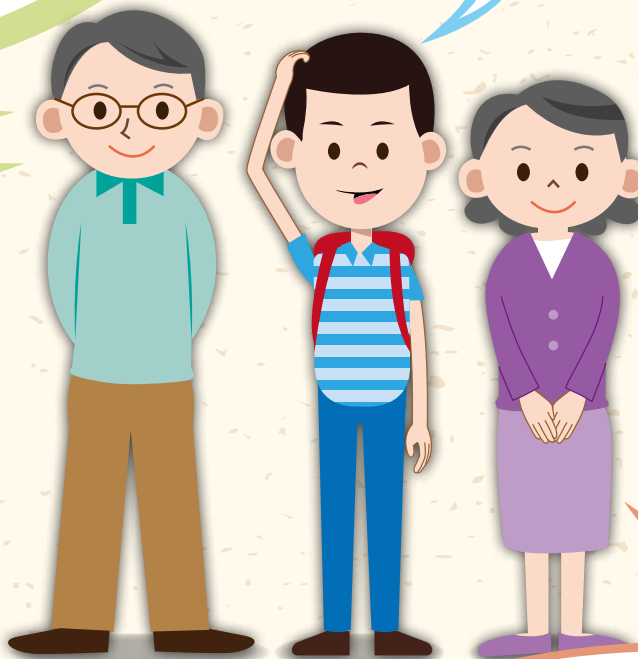
the staff of the SNTD of the SWD will transfer the money to your carer in accordance with our care plan.

9

I still don't understand!

10

Since you were little, you have been with us. We live together, go dining together and have fun together.



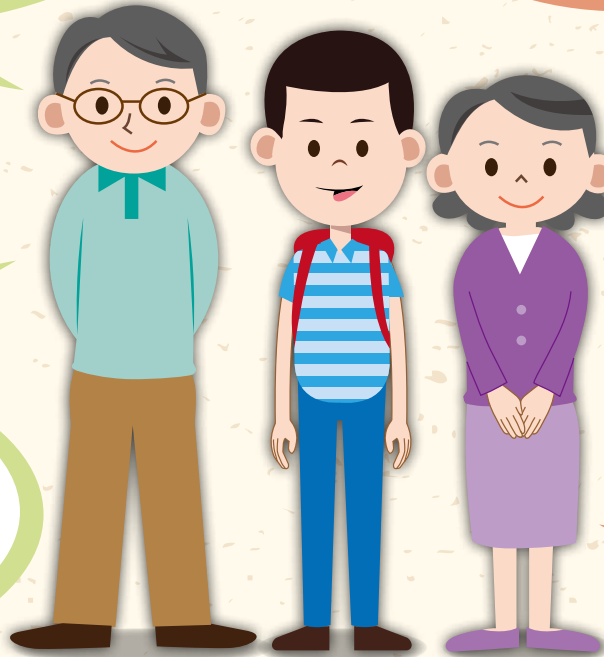




11 You participate in different activities and we bring you to school or centre.



12 We bring you to the doctor when you are not well.



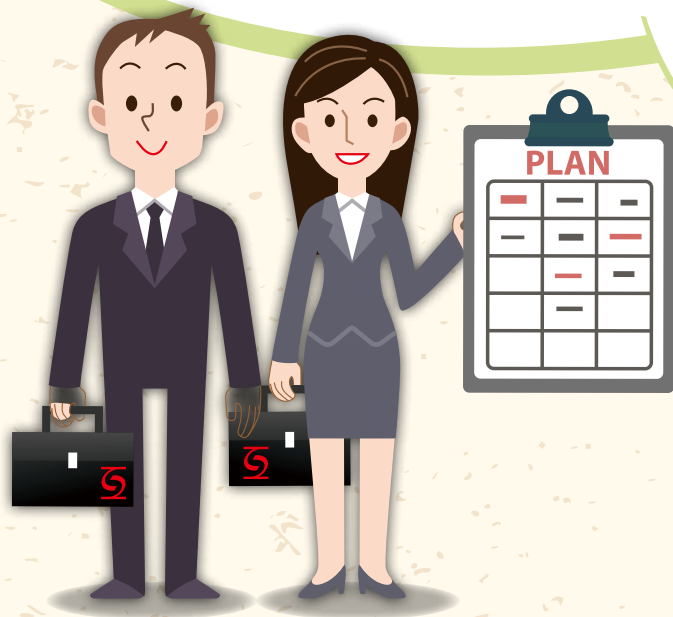
13 During the holidays, we take you out to meals, go shopping and travel around.



14 We want to stay with you forever, but one day we would not be here anymore (have passed away).



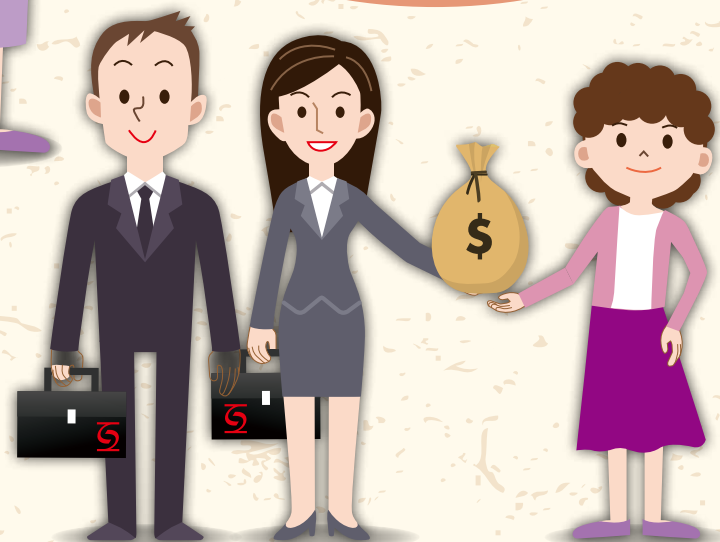
15 We are worried about your future living arrangement, so we have designed a care plan for you together with the staff of the SNTD of the SWD.



17 the staff of the SNTD will follow the care plan,



18 and transfer our money to your carer.



16 When we are no longer here (have passed away),





19 Your carer will look after you according to the care plan.

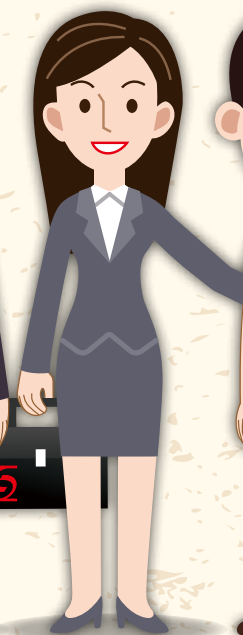
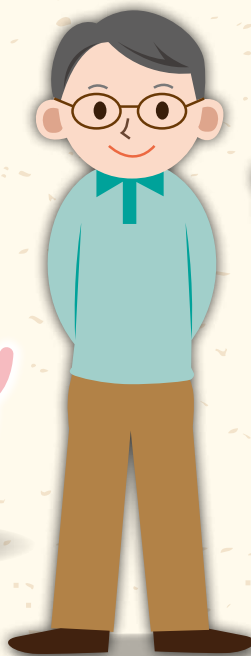


20

The staff of the SNTD of the SWD will visit you and chat with you.

21

They will also talk to your carer and see if you live happily.

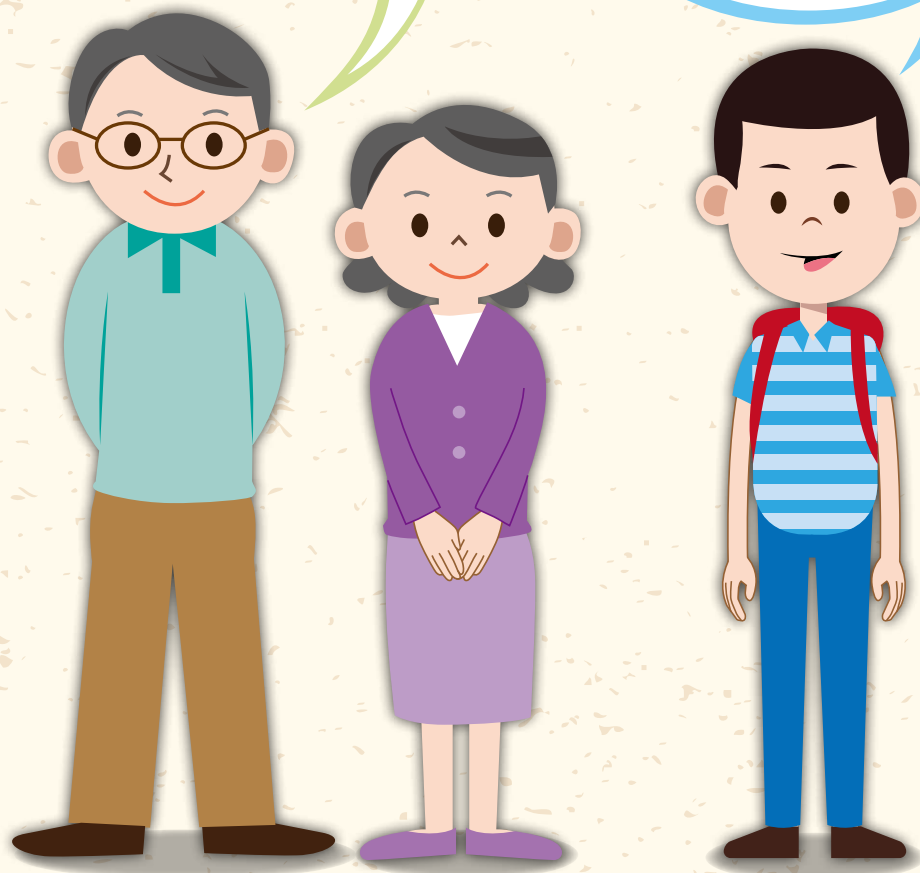


22

So Ming, does  
that give you a better  
idea of the SNT?

23

Yes, I get it  
now!



## How to apply?

To find out more about the SNT, please contact the SNTO of the SWD for further information:

Address:	Unit 201, 2/F, THE HUB, 23 Yip Kan Street, Wong Chuk Hang, Hong Kong
Tel.:	2116 5308
Fax:	2117 1451
Email:	sntoenq@swd.gov.hk
Website:	<a href="https://www.swd.gov.hk/en/pubsvc/rehab/cat_fundtrustfinaid/snto/">https://www.swd.gov.hk/en/pubsvc/rehab/cat_fundtrustfinaid/snto/</a>
Office hours:	Monday to Friday 8:45 am to 1:00 pm 2:00 pm to 6:00 pm Closed on Saturdays, Sundays and public holidays





SWD Homepage



社會福利署  
Social Welfare Department