

# Residential Care Service Voucher (RCSV) Scheme for the Elderly

## Features

### 01 Money-following-the-user

Provide elderly persons with greater flexibility to freely choose and switch among residential care homes for the elderly (RCHes) under the Scheme according to their needs.

### 02 Users pay in accordance with affordability

Elderly persons with lower affordability will pay less while the Government pays the remaining amount of the voucher value.

### 03 No waiting required

Elderly persons can be admitted to participating RCHes without having to wait.

### 04 Six-month trial period

Elderly persons can try to adapt to life in RCHes.

## Eligibility Criteria

All elderly persons who have been assessed and **recommended for residential care services (RCS)** under Social Welfare Department's (SWD) Standardised Care Need Assessment Mechanism for Elderly Services and are waitlisted for **care and attention places** or **nursing home places** on the Central Waiting List (CWL) for Subsidised Long Term Care (LTC) Services.

## Recognised Service Providers (RSPs)

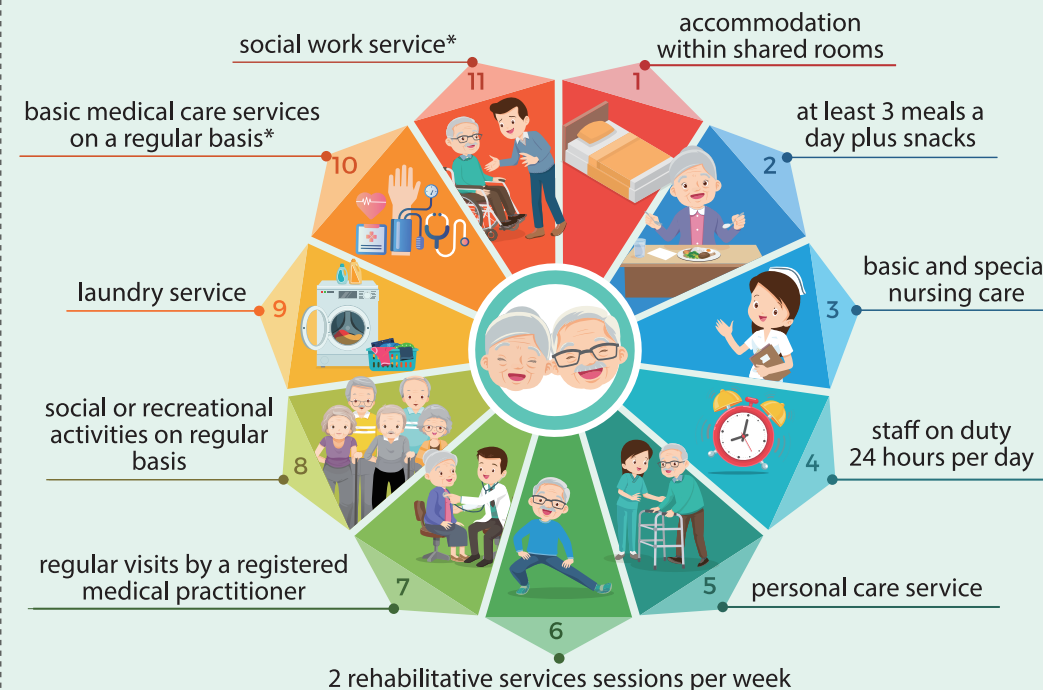
- RSPs (RCHes participating in the Scheme) must be providing non-subsidised places and have to meet the requirements specified by SWD on space standard, staffing and track record.
- Currently there are different types of RSPs, including subvented homes, contract homes, self-financing homes run by non-governmental organisations, Category EA1 homes under the Enhanced Bought Place Scheme and private RCHes.



SWD Elderly Information  
Website at  
[www.elderlyinfo.swd.gov.hk/en](http://www.elderlyinfo.swd.gov.hk/en)

## Scope of Service

RSPs provide individual voucher holders with a "standard service package" covered by the voucher value as follows –



\*Only applicable to voucher holders of nursing home places.

## Top-up Payment (Optional)

Voucher holders may make a top-up payment of up to 150% of the prevailing voucher value to **purchase additional services** (including single/double-room dormitory, additional physiotherapy / occupational therapy sessions and acupuncture, etc.) from RSPs.



## Co-payment Arrangement

- Each voucher applicant will be assessed on the basis of his/her **individual** financial condition, in order to determine their co-payment level. A sliding scale of co-payment at 8 levels is shown below –

User co-payment percentage of voucher value								
Level	0	1	2	3	4	5	6	7
Percentage	0%	10%	20%	30%	40%	50%	62.5%	75%

- RCSV applicants who choose not to take the means test will pay the highest co-payment amount (Level 7).
- RCSV users may still receive Social Security Allowance, including Old Age Living Allowance/Old Age Allowance/Normal Disability Allowance, subject to their eligibility under the respective schemes.

## How to Apply

- SWD will send letters to invite eligible elderly persons who are newly registered on the CWL to apply for RCSVs.
- Eligible elderly persons can download the application form from the RCSV Scheme's website.
- Please submit the completed application form together with supporting documents to Residential Care Service Voucher Office of SWD at Rooms 2701-07, 27/F, Two Chinachem Exchange Square, 338 King's Road, North Point, Hong Kong (Exit B1, North Point MTR Station / Exit B, Fortress Hill MTR Station) by post or in person.
- Eligible elderly persons can also fill in and submit the e-application form via the Voucher Information System for the Elderly (VISE).



VISE at  
<https://vise.swd.gov.hk/vise/en>

## Enquiry

- Residential Care Service Voucher Office of SWD**  
(Telephone: 3107 3280/3107 3290)  
(9:30 am to 1:00 pm and 2:30 pm to 5:00 pm on Monday to Friday, except public holidays)
- Responsible workers of elderly persons' LTC services
- For details and latest information on the Scheme, please visit the RCSV website for information.



RCSV website at  
[https://www.swd.gov.hk/en/pubsvc/elderly/cat\\_residentcare/psrcsv/](https://www.swd.gov.hk/en/pubsvc/elderly/cat_residentcare/psrcsv/)

Social Welfare Department  
Printed in March 2025

# 長者院舍照顧服務券計劃 Residential Care Service Voucher Scheme for the Elderly

為長者提供一個  
額外的選擇！



# 「長者院舍照顧服務券（院舍券）計劃」

## 計劃特點

### 01 錢跟人走

增加選擇的靈活性，長者可按需要自由選擇及轉換計劃下的安老院。

### 02 能者多付

讓負擔能力較低的長者支付較低比例的費用，政府則支付院舍券面值的餘額。

### 03 無須輪候

長者不用輪候即可按需要選擇入住參與計劃的安老院。

### 04 六個月試用期

讓長者嘗試適應院舍生活。

## 參加資格

所有經社會福利署（社署）的安老服務統一評估機制被評為**適合院舍照顧服務**及正在資助長期護理服務中央輪候冊（中央輪候冊）上輪候**護理安老宿位**或**護養院宿位**的長者。



## 認可服務機構

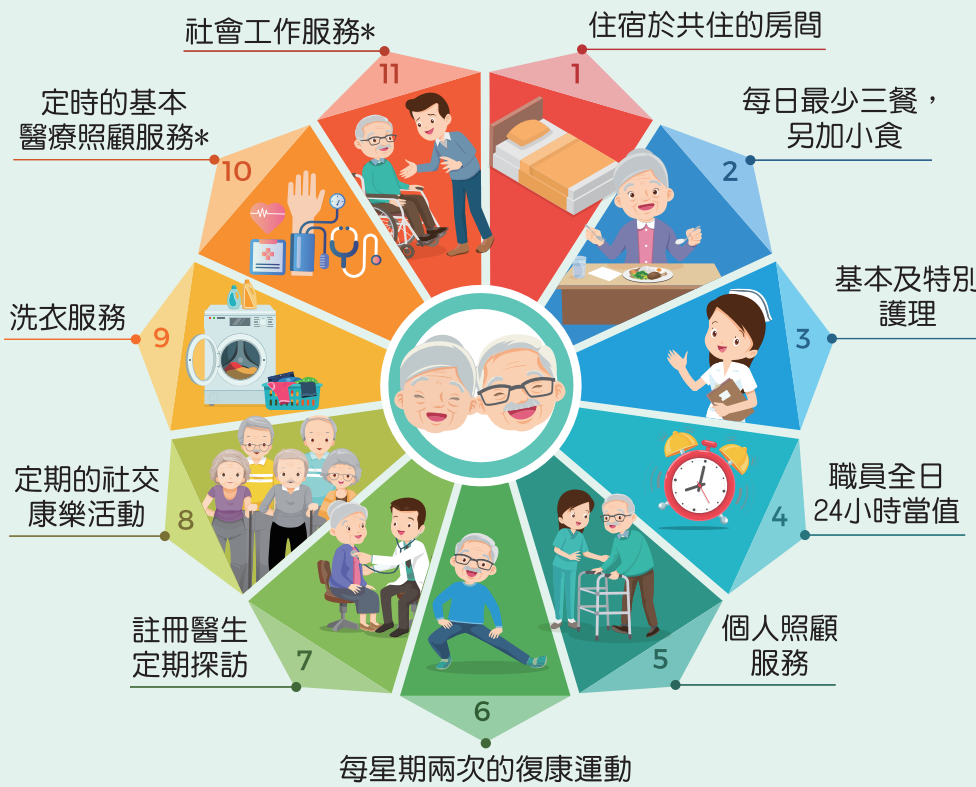
- 認可服務機構（即參與計劃的安老院）必須正在提供非資助宿位，並符合社署規定的空間、人手及過往服務記錄的指定要求。
- 現時認可服務機構的種類包括：津助院舍、合約院舍、非政府機構營辦的自負盈虧院舍、「改善買位計劃」甲一級院舍及私營安老院。



社署長者資訊網  
[www.elderlyinfo.swd.gov.hk/tc](http://www.elderlyinfo.swd.gov.hk/tc)

## 服務範圍

認可服務機構為個別院舍券持有人提供院舍券面值下的「標準服務」如下：



\*只適用於護養院宿位的院舍券持有人

## 額外付款（可自由選擇）

院舍券持有人可向認可服務機構額外付款以**購買額外服務**，包括：

單人/雙人房寢室、額外物理治療/職業治療節數及針灸等，而額外付款的款額上限為當時院舍券面值的150%。



## 共同付款安排

- 院舍券申請人以**個人**為單位接受經濟狀況審查，定出其共同付款級別。八個層遞式共同付款級別如下：

使用者須承擔院舍券面值的共同付款百分比								
級別	0	1	2	3	4	5	6	7
百分比	0%	10%	20%	30%	40%	50%	62.5%	75%

- 如院舍券申請人選擇不接受經濟狀況審查，便須繳付最高共同付款級別（級別7）的付款金額。
- 如符合相關申請資格，院舍券持有人在使用院舍券服務後仍可申領公共福利金，包括長者生活津貼/高齡津貼/普通傷殘津貼。

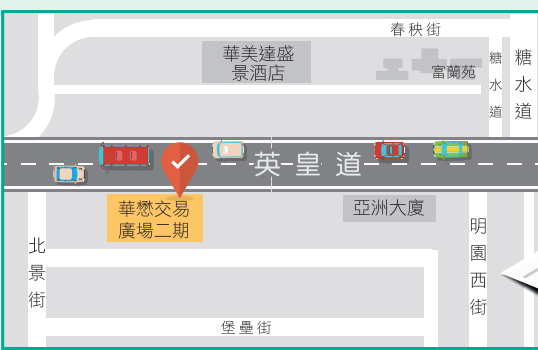


## 申請方法

- 社署會向在中央輪候冊新登記的合資格長者發信，邀請他們申請院舍券。
- 合資格的長者可於院舍券計劃網頁下載申請表格，並將申請表格連同所需文件寄回或交回：香港北角英皇道338號華懋交易廣場2期27樓2701-07室社署院舍照顧服務券辦事處（港鐵北角站B1出口/港鐵炮台山站B出口）。
- 合資格的長者亦可於「長者服務券資訊系統」填寫及遞交網上申請表。



長者服務券資訊系統  
<https://vise.swd.gov.hk/vise/tc>



## 查詢

- 社署院舍照顧服務券辦事處（電話：3107 3280 / 3107 3290）（星期一至星期五上午9時30分至下午1時、下午2時30分至下午5時，公眾假期除外）
- 跟進長者長期護理服務的負責工作人員
- 有關計劃的詳情及最新資訊，請瀏覽院舍券計劃網頁 [https://www.swd.gov.hk/tc/pubsvc/elderly/cat\\_residentcare/psrcsv/](https://www.swd.gov.hk/tc/pubsvc/elderly/cat_residentcare/psrcsv/)

